



## Quick Start Guide (EN)

### 1 Packing List



Recorder×1  
(1TB built-in HDD)

- Power Adapter×1
- Network Cable×1
- Mouse×1
- SATA Power Cable×1
- SATA Cable×1
- NVR QSG×1
- 1TB HDD(Built-in)×1



Camera×4

- Screw Package×1
- Positioning Map×1
- IPC QSG×1

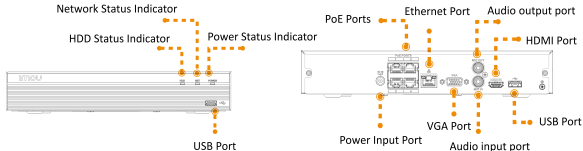


Network Cable  
(60ft)×4



Kit QSG×1

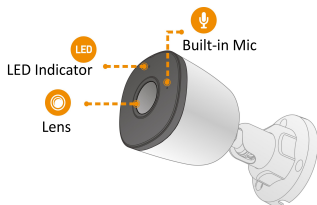
### 2 Recorder





LED Indicator Status	Recorder status
HDD status indicator off	HDD is working properly
HDD status indicator on	HDD failure
Network status indicator off	Network connection is normal
Network status indicator on	Network connection failure
Power status indicator on	Power connection is normal

### 3 Camera



The pattern of the LED indicator is included in the following table.

LED Indicator Status	Device status
Off	● Powered off/LED turned off
Red light on	● Booting ● Device malfunction
Green light on	Operating properly
Red light flashing	Network connection failed
Green and Red light flashing alternately	Firmware updating



## 4 Connection

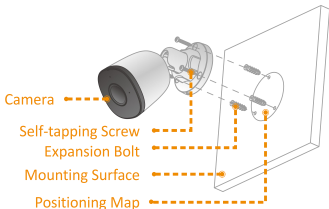
PoE connection: After NVR and PoE cameras are powered on, the PoE cameras will automatically connect to corresponding channel.

**Step 1** Select the area to monitor.

**Step 2** Lay out the network cable.

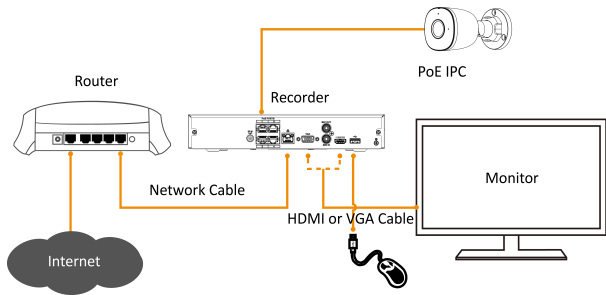
**Step 3** Install and fix the camera.

- 1) Drill screw holes on the mounting surface as the positioning map shows, and then put in the expansion bolts.
- 2) Attach the camera pedestal to the mounting surface with the self-tapping screws.
- 3) Connect network cable to the camera.



**Note:** Make sure the mounting surface is strong enough to hold at least three times of the device weight.

**Step 4** Install and connect hardware according to the following figure.



**Step 5** Make sure that the connection is correct and power on the recorder. The PoE cameras will automatically connect to corresponding channel.

**Step 6** Initialize the Recorder. For details, see “[Local Basic Operation – 2 Initialization](#)”.

**Step 7** Configure the Recorder quickly by Startup Wizard. For details, see “[Local Basic Operation – 3 Startup Wizard](#)”.

**Note:**

The dotted line in the figure represents a VGA cable or HDMI cable, choose one as needed.

## 5 Local Basic Operation

### 1 Power On and Off

**Booting up:**

Connect a monitor to the Recorder, and then plug in the power to boot up the Recorder.

**Shutdown:**



Select **Main Menu > Shutdown**, and then click **Shutdown**. Unplug the power after the monitor is blank.

**Note:** Do not force the Recorder to shut down(or unplug the power) when the interface is indicating **Saving data** or the Recorder is recording videos.

## 2 Initialization

After turning on the Recorder for the first time, you need to initialize the Recorder by the following steps.

**Step 1** Set admin login password.

The default user name is admin, users should set the device password by himself, this password will be used when to add the Recorder in Imou Life app.

Device Initialization

1. Enter Password    2. Unlock Pattern    3. Password Protection

Username            admin

Password           

Confirm Password  

Prompt Question   

Next

**Step 2** Draw an unlock pattern for login.

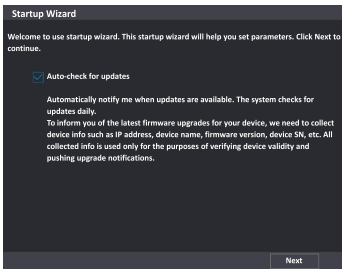
**Step 3** Configure the password protection parameters.

**Note:** Be sure that the email address for resetting password is correct.

## 3 Startup Wizard



After successfully initializing the device, it will begin the Startup Wizard where you can quickly configure Recorder such as general settings, network settings and recording settings.



#### 4 Live View

After you logged in, the system goes to multiple-channel live view mode by default. You can view the live video of each channel.

#### 5 Playback

Select **Main Menu > Playback** or right-click on the review interface and select **Search**. You can playback records according to the configured record type, record time and channel.

### 6 App Operation

**Step 1** Scan the QR code icon at the upper right corner of **Main Menu** to install Imou Life App. Run Imou Life App, and then register an account for first use.

**Note:** Skip Step 1 if you have completed the download and registration of Imou Life App in the Startup Wizard.

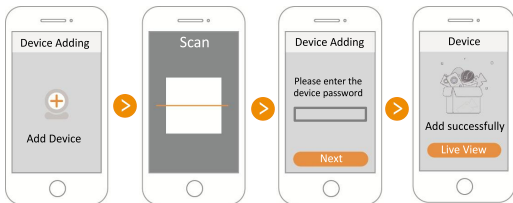


**Step 2** Tap “+” at the top-right corner of Device tab and then scan the QR code of Recorder or enter the serial number of the Recorder.

You can find the QR code of Recorder on the label or at the upper right corner of **Main Menu**.

**Step 3** Enter the device password, the device password was set by users as mentioned in [5 Local Basic Operation – 2 Initialization – Step 1](#).

**Step 4** After adding the Recorder to Imou Life app, you can perform operations such as viewing video records, viewing alarms, setting alarm and sharing the Recorder.

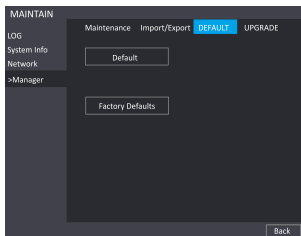




## 7 FAQ

Q: How to restore the factory default of the Recorder?

A: Right-click the local GUI and select **Main Menu > MAINTAIN > Manager > Default > Factory Defaults**.



Q: How to add a PoE camera to a running Recorder?

A: Connect the PoE camera to the PoE ports of recorder, the PoE camera will automatically connect to corresponding channel.

Q: Why are there no video records in local playback.

A: Three possible reasons: 1. Wiring error. 2. HDD malfunction. 3. Record function is not enabled.

Check method:

1. Check the HDD status indicator. If the light is on, the HDD is working abnormally.





2. Select **STORAGE > HDD DETECT** to run the diagnosis, replace the HDD if there are damages.
3. Right-click the local GUI and select **Manual > Record** to check if the record function is enabled.

Q: Why is the playback time inconsistent with actual time after enabling cloud storage.

A: Ensure that the IPC time is consistent with Recorder time. Select **SYSTEM > GENERAL > General** to enable IPC Time Sync, you can also select **SYSTEM > GENERAL > Date&Time** to modify Recorder time.

## Disclaimer

**Dahua Technology Poland Sp. z o.o. shall not be responsible for device defects incurred due to the using non-dedicated applications for the start and operation of the Imou series devices. The device is intended for use only with the dedicated Imou Life application (formerly Lechange, Easy4ip, Imou).**

## About the Guide

- This quick start guide is for reference only. Minor difference might be found in user interface.
- All the design and software here are subject to change without prior written notice.
- All trademarks and registered trademarks mentioned are the properties of their respective owners.
- Please visit our website or contact your local service engineer for more information.
- If there is any uncertainty or controversy, please refer to our final explanation.